



Round About Flower Necklace

Tutorial by Linda Roberts

the
**BEAD
SMITH**[®]

This project may be taught
and distributed exclusively by
customers of the BeadSmith.

An advanced beginner or intermediate level tutorial.



Materials and Supplies List (to create a 16" necklace)

7 gm Mini Duos
10 gm Super Duos
2 gm O Beads in Color A
2 gm O Beads in Color B
2 gm 15/0 Miyuki Seed Beads
1 Toggle Clasp
Size 11 or 12 Beading Needles
6 lb Fireline or Other Beading Thread

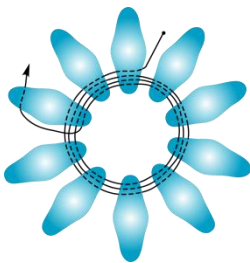
©2015 Linda L Roberts, All rights reserved. Distributed by The Beadsmith. This project may be distributed and taught by customers of the Beadsmith. This document may not be altered in any way without first obtaining written approval from My Heart Beads for You/BeadsForever.

Create the Flower Components

Create five flower components. The middle component will be the largest, with 10 Mini Duos in the center circle. On each side of the middle component will be two medium sized flowers and these will have 8 Mini Duos in the center circle. Next to the medium sized flowers will be two smaller flowers. These will have 6 Mini Duos in the center circle. Each flower will be made the same way. The only difference is the number of beads used.

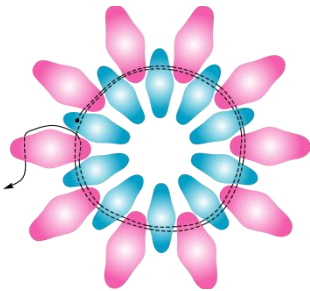
For each flower you will need about 30 inches (76 cm) of thread. Keep a tail thread of approximately 6 inches (15 cm). Hold on to the tail thread with your non-needle hand to help control your thread tension.

Step 1: Create One Large Center Flower



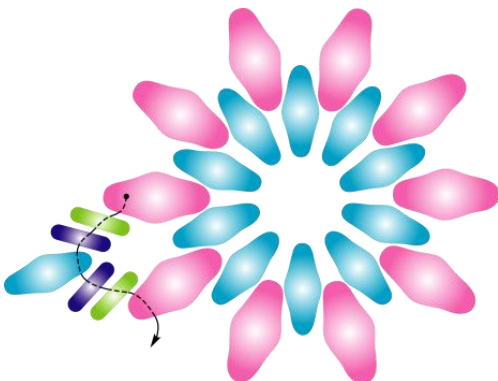
STEP A: Pick up 10 MINI Duos. Pass through all 10 of the Mini Duos again pulling the beads closely together in a circle. Pass through this circle of beads two more times.

Pass through two more beads and then pass through the top hole of the same mini duo you exited.



STEP B: Add one SUPER Duo around the outer edge, in between each Mini Duo. Pass through this circle of beads again.

Exit from one of the Super Duos and then pass through the top hole of the same Super Duo you exited.

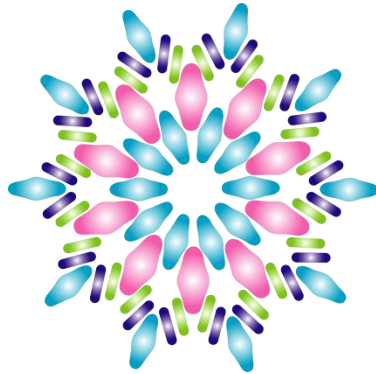


STEP C: With the thread exiting the top hole of a Super Duo, pick up one O Bead (Color A), one O Bead (Color B), one MINI Duo, one O Bead (Color B) and one O Bead (Color A). Pass through the next Super Duo.

Repeat this step adding the same beads in between each Super Duo. The tail thread may be cut off at this point, but leave the needle thread end uncut.

When finished, the large flower will look like the first example on the next page.

©2015 Linda L Roberts, All rights reserved. Distributed by The Beadsmith. This project may be distributed and taught by customers of the Beadsmith. This document may not be altered in any way without first obtaining written approval from My Heart Beads for You/BeadsForever.



Large Flower

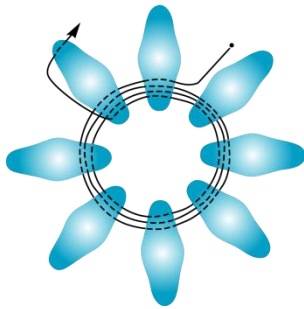


Medium Flower



Small Flower

Step 2: Create Two Medium Size Flowers:

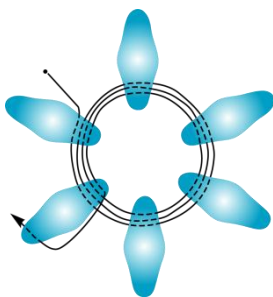


STEP A: Pick up 8 MINI Duos. Pass through all of the Mini Duos again pulling the beads closely together in a circle. Pass through this circle of beads two more times.

Pass through two more beads and then pass through the top hole of the same mini duo you exited.

Follow Steps B and C in Step 1 to complete two medium sized flowers.

Step 3: Create Two Small Flowers



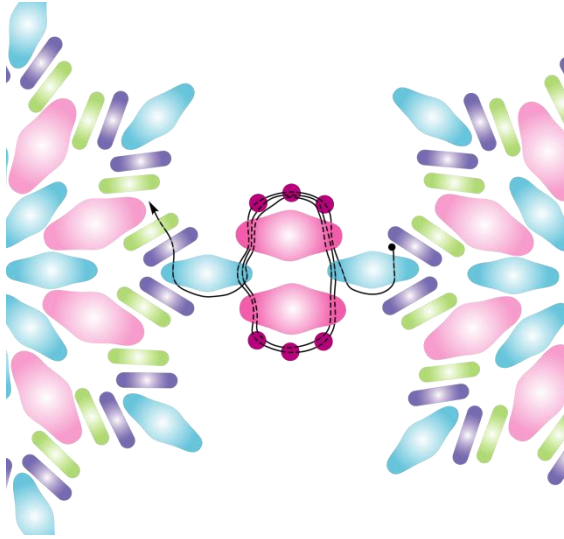
STEP A: Pick up 6 MINI Duos. Pass through all of the Mini Duos again pulling the beads closely together in a circle. Pass through this circle of beads two more times.

Pass through two more beads and then pass through the top hole of the same mini duo you exited.

Follow Steps B and C in Step 1 to complete two small sized flowers.

Step 4: Connect the Flower Components:

All of the flowers will be connected in the same way. Connect the middle size flowers to both sides of the large flower and the small flowers to both of the medium size flowers. Use the existing threads to do this, securing the threads into the connected flowers before cutting them off.



With the thread exiting one of the outer Mini Duos of a flower component, pass the thread through the top hole of the same Mini Duo bead.

Pick up one Super Duo and three size 15 seed beads. Pass through the 2nd hole of this same Super Duo, down through the open hole of the Mini Duo of the next flower component.

Pick up one Super Duo and three size 15 seed beads. Pass through the 2nd hole of this same Super Duo and through the top outside hole of the original Mini Duo.

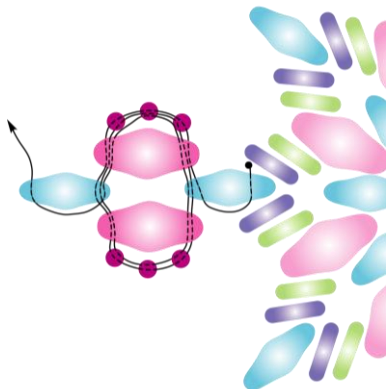
Go around this same circle of beads again, and then continue on into the flower component. Secure the thread and cut off.

Your flowers should look like this photo:



Step 5: Create the Necklace "Chain"

Using a comfortable length of thread, secure it in the small flower and exit from the middle Mini Duo sticking out on the opposite open side of the flower. Follow the same basic procedure you used to connect the flowers in Step 4 with one difference.



After you pick up the first Super Duo and three size 15 seed beads, pass down through the 2nd hole of the same Super Duo. Then pick up one Mini Duo, one Super Duo, and three size 15 seed beads.

Pass up through the 2nd hole of the Super Duo just added and through the outer hole of the Mini Duo where you started. Go around this circle of beads again to reinforce, exiting from the new Mini Duo just added. Pass the thread along the side of the Mini Duo and through the 2nd hole of this same Mini Duo bead. Repeat the same steps to make your necklace chain as long as desired.

©2015 Linda L Roberts, All rights reserved. Distributed by The Beadsmith. This project may be distributed and taught by customers of the Beadsmith. This document may not be altered in any way without first obtaining written approval from My Heart Beads for You/BeadsForever.

Repeat Step 5 to create the beaded chain on the other side of your necklace. Remember that your clasp will add approximately 1" to the overall length. Your necklace chain will look like this:



Step 6: Attach the Clasp

You may use any style of clasp that you like on this bracelet. I chose to add a toggle clasp. With the thread exiting the outside hole of a Mini Duo bead, pick up 7 Size 15 seed beads. Pass through the connecting ring on the loop side of the clasp. Pass back through the top hole of the Mini Duo creating a circle of beads. Go around this circle of beads two more times to reinforce. Weave in all threads following the established thread path, tying a couple half hitch knots along the way, and then cut off.



Repeat this step to add the toggle part of the clasp on the other end of the necklace. You may extend the necklace with a double loop (as shown) if desired.



©2015 Linda L Roberts, All rights reserved. Distributed by The Beadsmith. This project may be distributed and taught by customers of the Beadsmith. This document may not be altered in any way without first obtaining written approval from My Heart Beads for You/BeadsForever.