



Rulla Filigree beaded bead

Learn to make these large, filigree-like beaded beads with Matubo 7/0s, 8/0s and Rullas ...



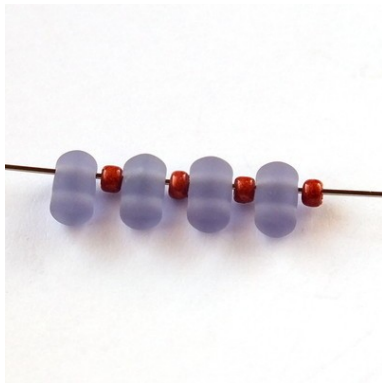
Material:

- Matubo Rulla beads (24 pcs)
- 4mm firepolished beads (18 pcs)
- 11/0 Japanese seed beads (approx. 2 grams)
- 15/0 Japanese seed beads (approx. 1 gram)
- Matubo 8/0 (60 pcs)
- Matubo 7/0 (12 pcs)
- 18mm wooden or plastic round bead (1 pc)

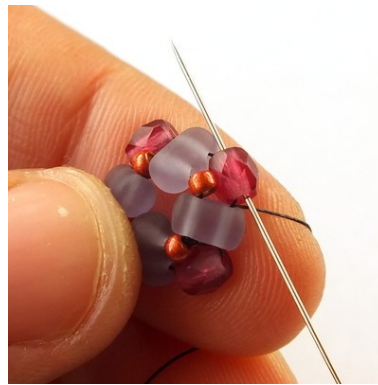
Difficulty: intermediate

Technique:

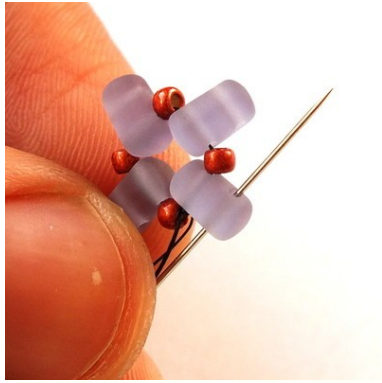
Right angle weave / peyote stitch / netting



1) String one Rulla and one 11/0, total four of each.



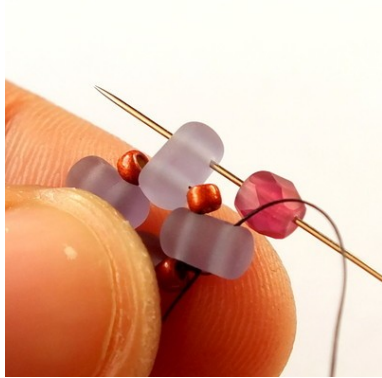
6) Pass through the nearest FP bead.



2) Slide all the beads to the end of the thread. Tie a square knot to form a "cross" and then pass through the upper hole of the nearest Rulla.



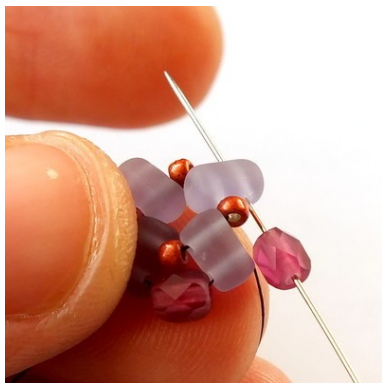
7) Add one Rulla, one FP, one Rulla, one FP, one Rulla, one FP and one more Rulla and then pass through the same FP you exited from in the previous step.



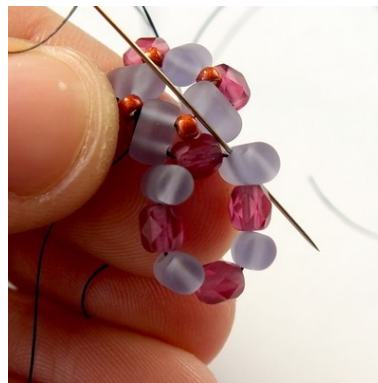
3) Add one 4mm FP and pass through the upper hole of the next Rulla.



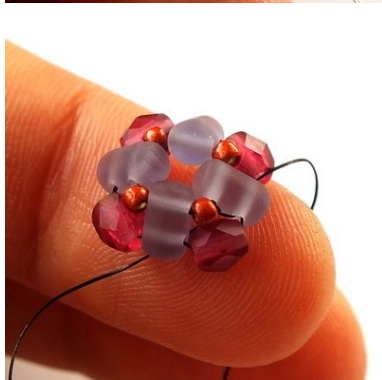
8) This is how it should look after completing step 7.



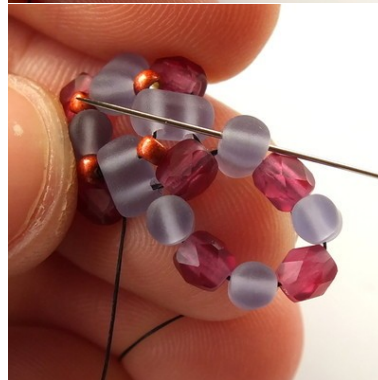
4) Repeat step 3 ...



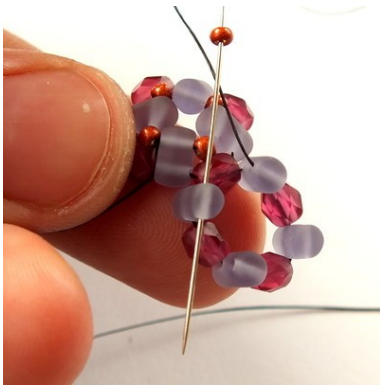
9) Pass through the lower hole of the nearest Rulla ...



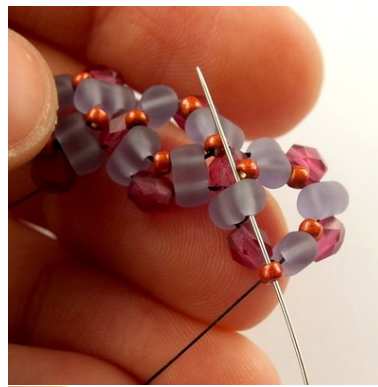
5) ... until you reach the end of the row.



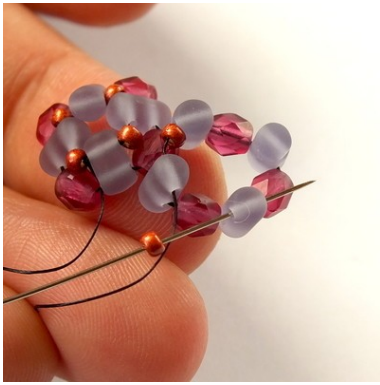
10) ... and then pass back through the upper hole of the same Rulla.



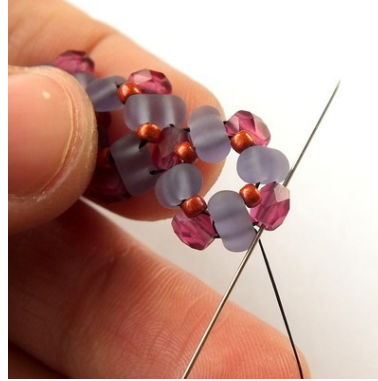
11) Add one 11/0 and then pass through the upper hole of the next Rulla.



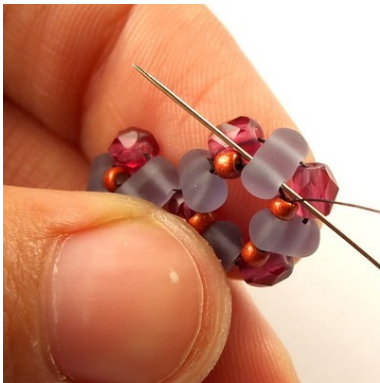
16) ... step 8 - 13 ...



12) Repeat step 11 until you reach the end of the row.



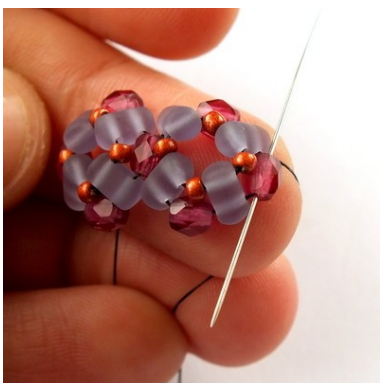
17) ... and step 14



13) If you have any trouble keeping your tension strong enough, you can weave through the last row one more time.

18) Repeat steps 15 - 17 until your strip is exactly 5 "units" long. Then connect both sides of the strip together by adding one more unit.

Add one Rulla, one FP and one Rulla and pass through the "first" FP bead ...

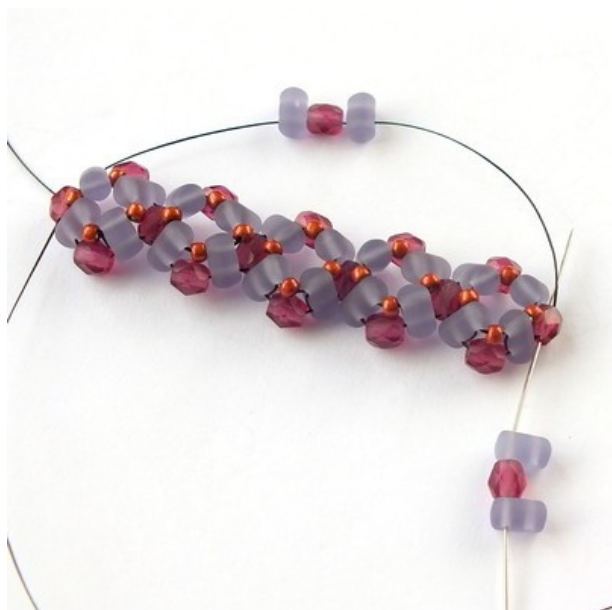


14) Weave through beads to get to 4mm FP bead which lies directly at the end of the "strip".

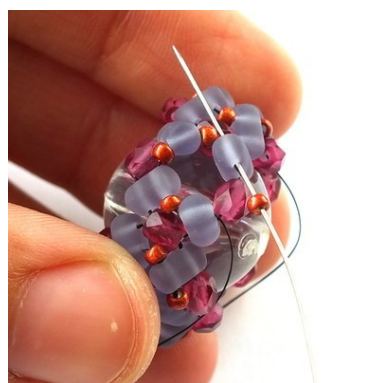


15) Now add another "unit" by repeating step 7 ...

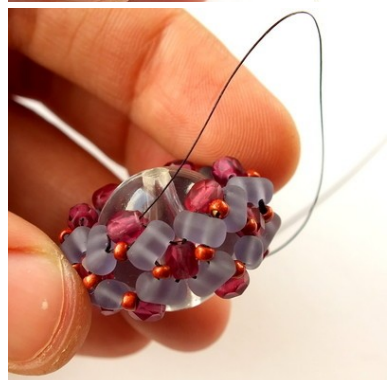
19) ... then add one Rulla, one FP and one Rulla and then pass through the same FP bead you exited from at the beginning of step 18. Pull snug. And again - if you have any trouble with tension, weave through the last row one more time.



20) Now you can put the "ring" on the core bead ...



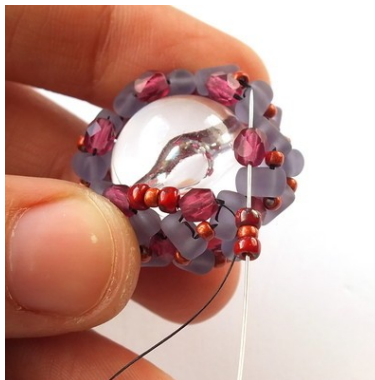
21) ... and then pass through the lower hole of the nearest Rulla and then back through the upper hole of the same Rulla and then add one 11/0 between the upper holes of the four new Rullas (like in steps 11, 12 and 13).



22) Weave through beads to get to one of the FP on the side of the ring.



23) Add one 8/0, one 11/0 and one 8/0 and then pass through the next FP.



24) Repeat step 23 ...



25) ... until you reach the end of the row.



26) Add three 8/0s and then pass through the next three beads (8/0, 11/0 and 8/0) from the previous row.



27) Repeat step 26 ...

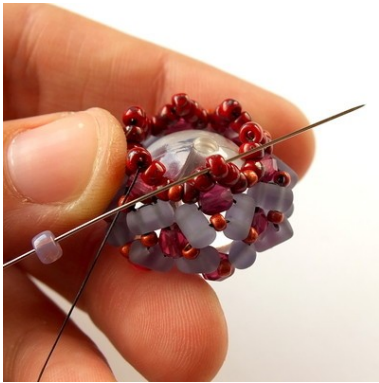
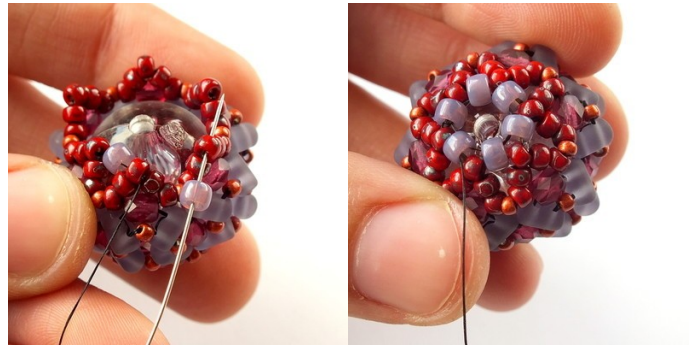


28) ... until you reach the end of the row.

33) Now weave through beads to get to one of the FPs on the other side of the ring - then repeat steps 23 - 32.

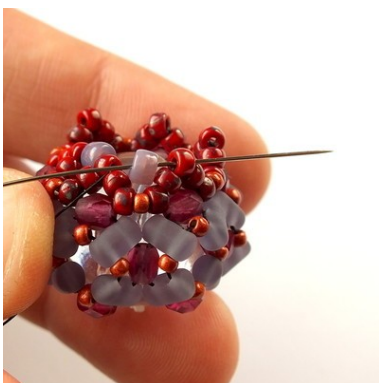


29) Pass through the first two 8/0s from the previous row.

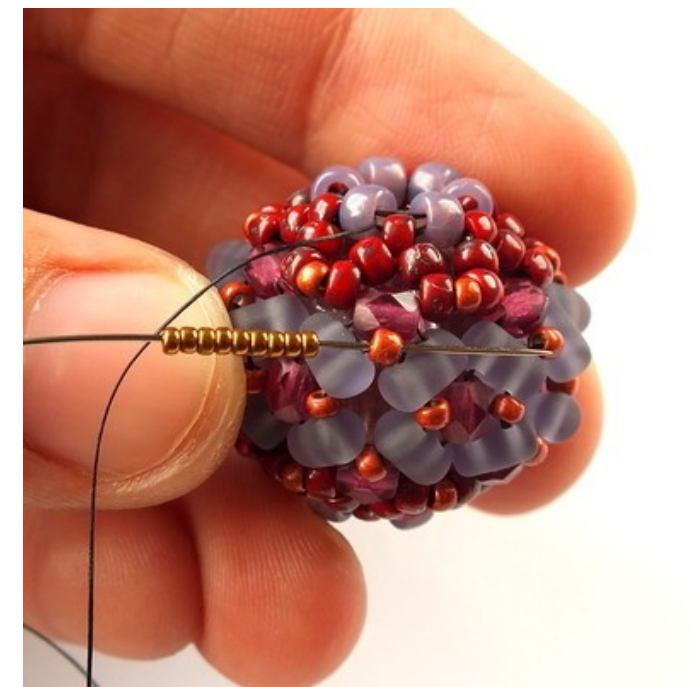


30) Add one 7/0 and pass through the next "middle" 8/0 from the previous row.

34) You should exit from one of the 7/0s on the top of the bead. Add nine 15/0s (I am using Miyuki 15/0 - when using another brand of seed beads, the number might be different) and then pass through the nearest 11/0 from the basic ring (as shown in the picture below).



31) Repeat step 30 until you reach the end of the row.



32) Weave through all the six 7/0s from the previous row.

35) Add nine 15/0s and then pass through the next 7/0 on the top of the bead.



36) Repeat steps 34 and 35 until you reach the end of the row.



37) Now we will need to repeat steps 34 and 35 on the other side of the bead.

You can weave through all the beads to get to one of the 7/0s on the other end of the bead, but you can also take a shorter route - weave through beads to get to one of the 11/0s on the other side of the basic ring and start from there (as shown in the picture).

start from there (as shown in the picture).

38) Now repeat steps 35 and 34 until you reach the end of the row. Then tie a few half-hitch knots and cut off all the remaining thread.



39) If you want to turn the bead into a simple necklace, you will need two large bead caps, a piece of chain, a few eyepins, jump rings and larger beads.

