

“Crystal Cube” beaded bead



Material (1 bead):

Matubo 7/0 beads (20 pcs)
 4mm Czech firepolished (FP) beads (20 pcs)
 11/0 seed beads (approx. 1 g)
 8mm round bead (1 pc)
 Beading needle
 Thread (Nymo, Fireline)

Difficulty: intermediate

Technique: RAW, peyote stitch



1) String one 7/0 bead, one FP bead, one 7/0 bead, one FP bead, one 7/0 bead, one FP bead, one 7/0 bead, one FP bead, (8 beads total).



2) Slide all the beads to the end of the thread and tie a square knot to form a circle. Then pass through the nearest FP bead.



3) String one 7/0 bead, one FP bead, one 7/0 bead, one FP bead, one 7/0 bead, one FP bead, one 7/0 bead (7 beads total) and then pass through the same FP bead.



4) Now we have two circles of beads. The thread exits the middle FP bead. To continue, you will need to go to the “top” FP bead.



5) Now pass through the next Matubo 7/0 and FP bead



6) Then pass through the next Matubo 7/0 and FP bead. Now the thread exits the “top” FP bead.



7) Add one 7/0 bead, one FP bead, one 7/0 bead, one FP bead, one 7/0 bead, one FP bead, one 7/0 bead (7 beads total) and then pass through the same FP bead (like in step 3).



8) Now another circle has formed and the thread exits the middle FP bead. To continue, you will need to go to the "top" FP bead - like in steps 5 and 6.



9) Now add one 7/0 bead, one FP bead and one more 7/0 bead and then go through the "bottom" FP bead.



10) Now add one 7/0 bead, one FP bead and one more 7/0 bead again and then go back through the "top" FP bead. Pull snug. The "base" of the beaded bead will form.



11) Weave through next 7/0 and FP bead.



12) Add one FP bead and then go through the next FP bead in the row.



13) Add one FP bead and then go through the next FP bead in the row.



14) Add one FP bead and then go through the next FP bead in the row.



15) Add one FP bead and then make the step-up - go through the last FP in the previous row and also through the first FP in this row.



16) Add one 7/0 bead and then go through the next FP bead in the row.



17) Add one more 7/0 bead and then go through the next FP bead in the row.



18) Add one more 7/0 bead and then go through the next FP bead in the row.



19) Add one 7/0 bead and then go through the last FP in the previous row and also through the first 7/0 in this row.



20) Add one 11/0 bead and then go through the next 7/0 bead in the row.



21) Add one 11/0 bead and then go through the next 7/0 bead in the row.



22) Add one 11/0 bead and then go through the next FP bead in the row.



23) Add one 11/0 bead and then go through the last 7/0 in the previous row and also through the first 11/0 in this row.



24) Weave through all the four 11/0s in this row



25) One side of the bead is finished.



26) Now you have to weave through beads to get to the other side of the bead - the thread should exit from the FP bead.



27) Take the 8mm round bead and put it inside.



28) Repeat steps 12, 13, 14 and 15 (add FP beads)



29) Repeat steps 16, 17, 18 and 19 (add 7/0s between FP beads)



30) Repeat steps 20, 21, 22 and 23 (add 11/0s between 7/0s)



31) Repeat step 24 (weave through all the 4 11/0s)



35) Add three 11/0s, skip the next 7/0 and pass through the next "base" FP bead.

Embellishment



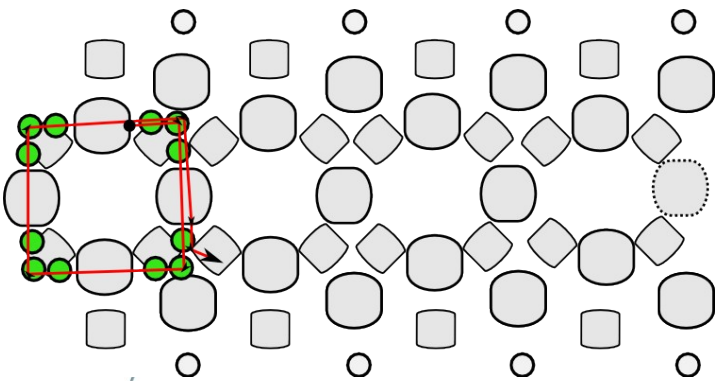
32) Weave through beads to get to one of the "base" FP beads (take a look at step 11 - these are the beads you will be working with)



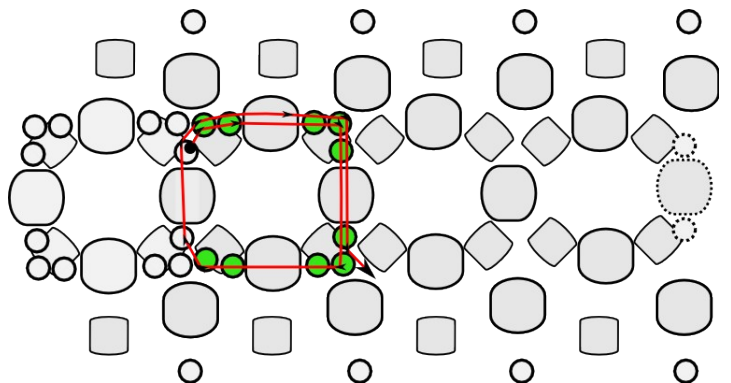
36) Add three 11/0s, skip the next 7/0 and pass through the next "base" FP bead.



37) Then pass through the next FP bead and also through one 11/0 bead (like pictured on the photo)



33) Add three 11/0s, skip the next 7/0 and pass through the next "base" FP bead.



34) Add three 11/0s, skip the next 7/0 and pass through the next "base" FP bead.



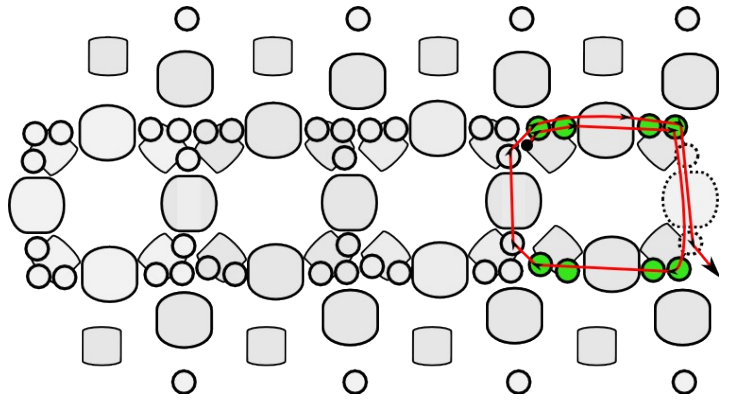
38) Add two 11/0 beads and go through the next FP bead.



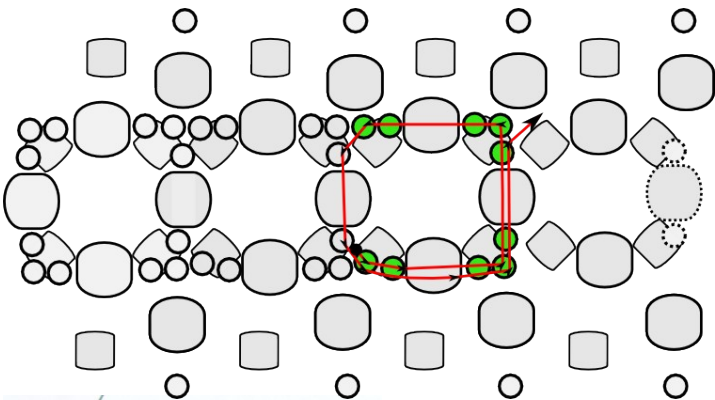
39) Add three 11/0 beads and then go through the next FP bead.
Repeat one more time.



40) Add two 11/0s and pass through one 11/0 bead and then through the next FP bead (like pictured on the photo)
Then weave through three 11/0s, one FP, three 11/0s, one FP and one 11/0



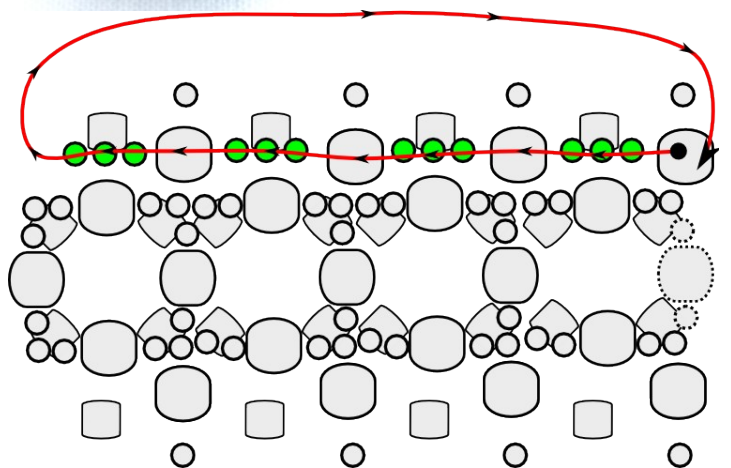
42) Add two 11/0s and then pass through the next FP bead.
Add two 11/0s, then pass through one 11/0, one FP and one 11/0.
Add two 11/0s and then pass through the next FP bead.
Add two 11/0s and pass through one 11/0 and one FP bead



41) Repeat steps 38, 39 and 40



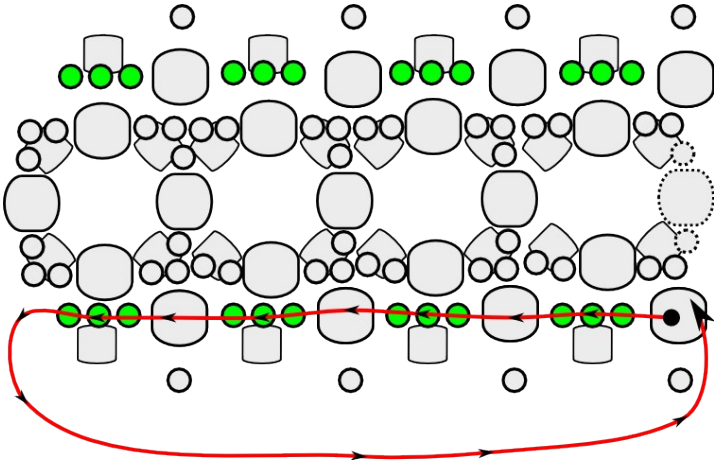
43) Weave through one 7/0, one FP and then another FP - the thread should now exit from one of the FP beads from steps 12 - 15



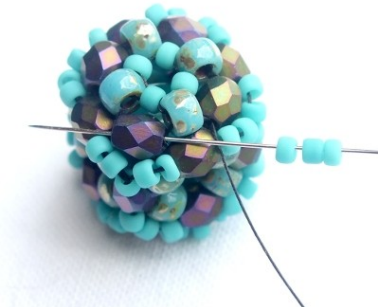
44) Add three 11/0s and then pass through the next PF bead from this row.



45) Repeat the previous step three more times.



46) Weave through beads to get to the other side of the bead and then repeat steps 44 and 45.



47) Tie a few half-hitch knots and then cut off the remaining thread.



To make these earrings, you need two Crystal Cubes, two ball headpins, two eyepins, two earwires, two more firepolished beads and four firepolished rondelles in matching color.